



Really Wild!!

Part 2

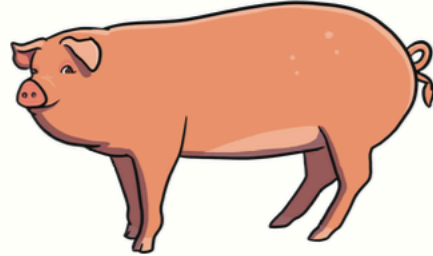


Match the Mom and Baby



Describe the Farm Animal

Choose the right words and phrases that describe the pig.



- | | |
|------------|--------------|
| red | pointy snout |
| curly tail | hairy |
| brown | short snout |
| long tail | dirty |
| pink | floppy ears |
| big horns | huge head |
| white | sharp claws |

Write a sentence to describe the pig.

Write 2 sentences to describe the pig.

Write some sentences using 'and' separate, starting with a capital letter and ending with a full stop.

Write some sentences to describe the pig.

Describe the Farm Animal



Choose the right words and phrases that describe the sheep.

- | | |
|------------|-------------|
| white | long ears |
| small | woolly |
| black | short legs |
| thick wool | fluffy |
| orange | pointy nose |
| four legs | big |
| grey | smooth paws |

Write a sentence to describe the sheep.

Write 2 sentences to describe the sheep.

Write some sentences using 'and' separate, starting with a capital letter and ending with a full stop.

Write some sentences to describe the sheep.

Describe the Farm Animal

Write a sentence to describe the cow.

Write 2 sentences to describe the cow.

Write some sentences using 'and' separate, starting with a capital letter and ending with a full stop.



Choose the right words and phrases that describe the cow.

- | | |
|-------------|------------|
| black | hooves |
| four legs | feathers |
| white | big wings |
| sharp claws | furry |
| brown | big nose |
| large feet | spots |
| patches | rough skin |

Write some sentences to describe the cow.

Farm-Themed Phase 2

Say It, Join It, Write It

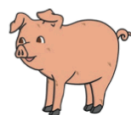
Look at the picture. Say the word. Join the letters to build the word, then write the word in the boxes.

say it



d s ck
a u t

--	--	--



p d n
m i g

--	--	--



g e n
h o ck

--	--	--



k e t
c a r

--	--	--



h o b
d ff g

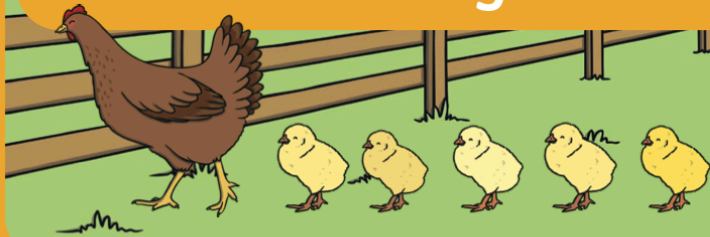
--	--	--



m u ll
ss b d

--	--	--

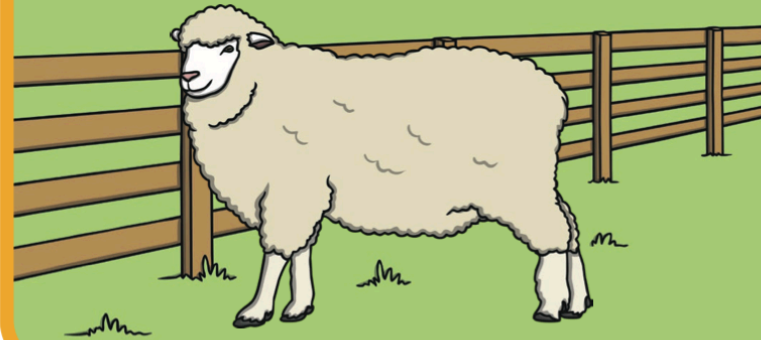
Farm Animals Drama Activity Cards



twinkl.com

can you act like a...

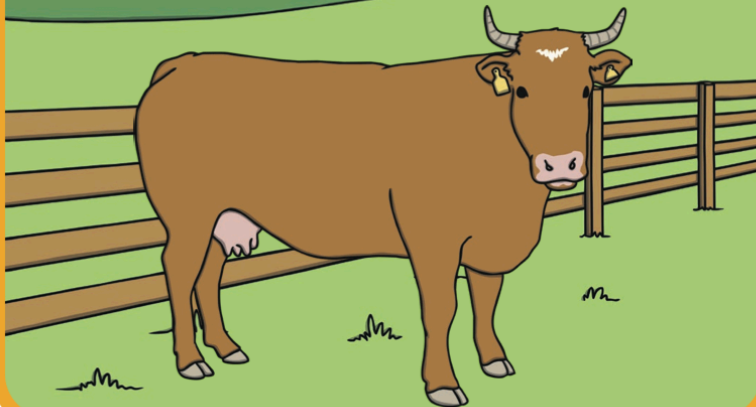
sheep



twinkl.com

can you act like a...

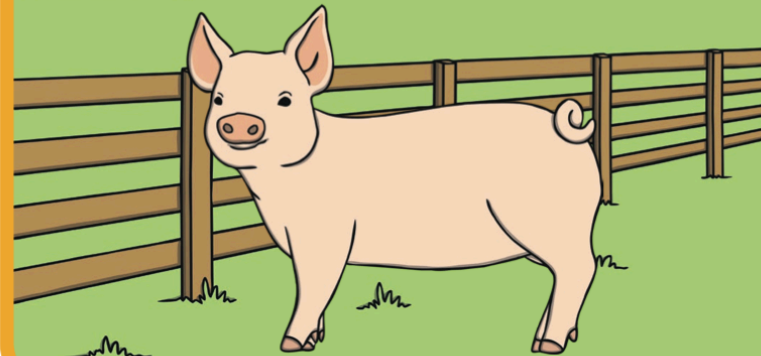
cow



twinkl.com

can you act like a...

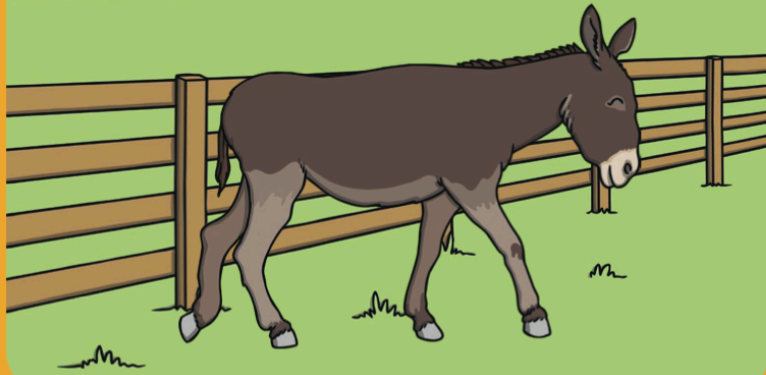
pig



twinkl.com

can you act like a...

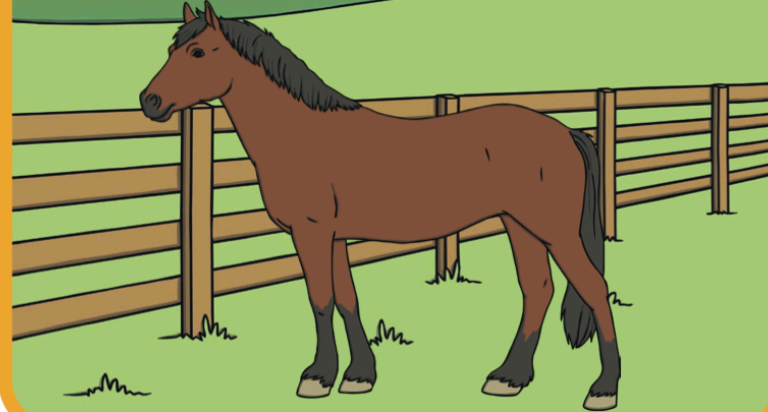
donkey



twinkl.com

can you act like a...

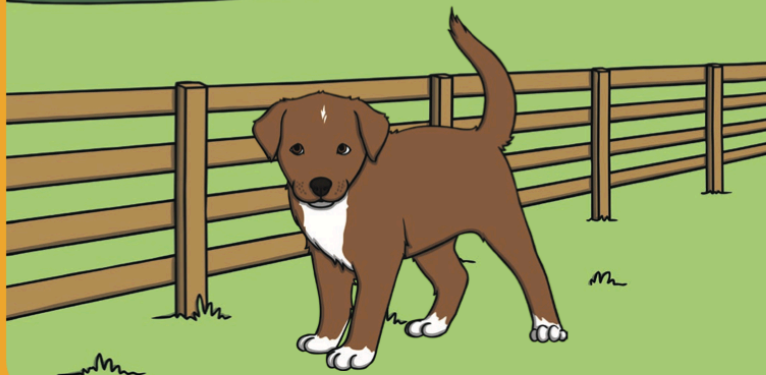
horse



twinkl.com

can you act like a...

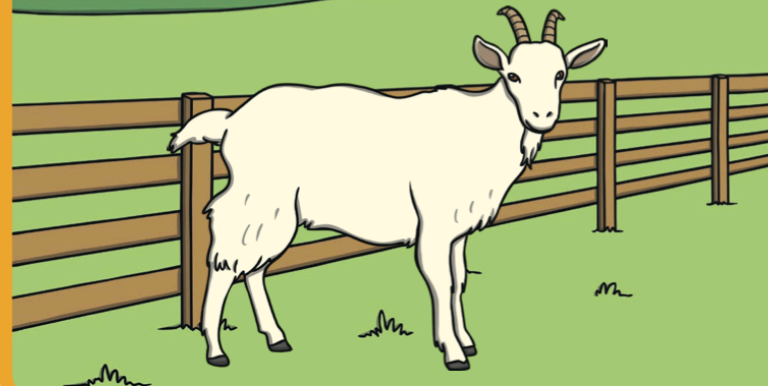
dog



twinkl.com

can you act like a...

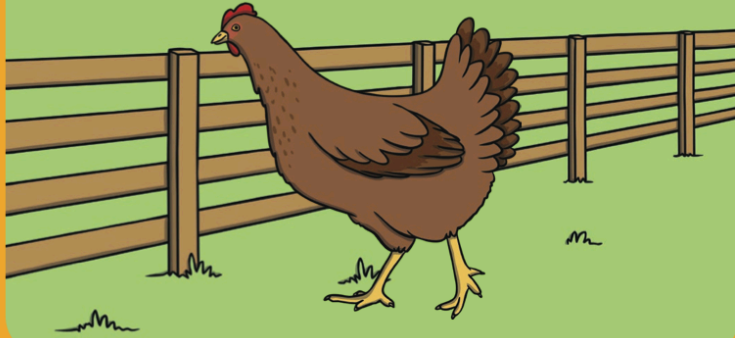
goat



twinkl.com

can you act like a...

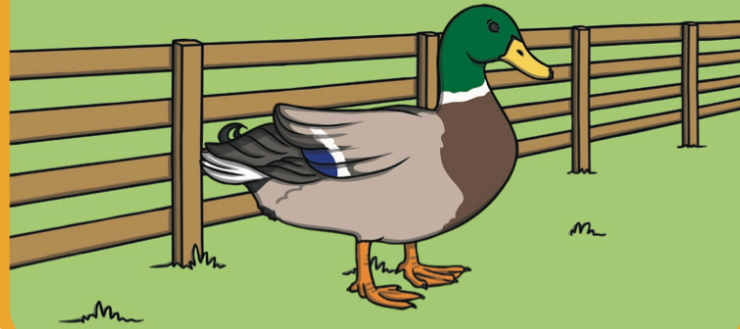
hen



twinkl.com

can you act like a...

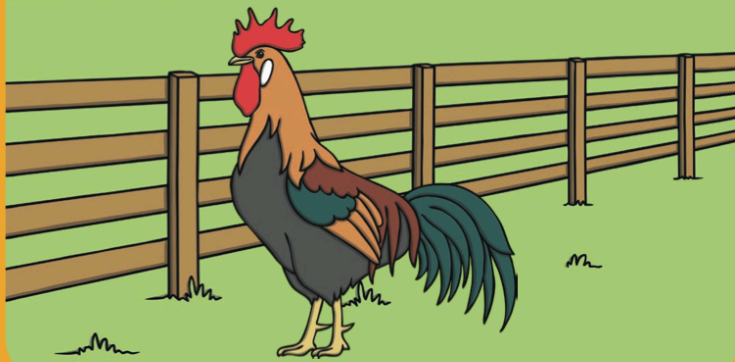
duck



twinkl.com

can you act like a...

cockerel



twinkl.com

can you act like a...

mouse



twinkl.com

Watch these videos of Barnaby Bear at a farm, then have a look in your kitchen for food that is produced on the farm:

<https://www.bbc.co.uk/bitesize/clips/zs97tfr>



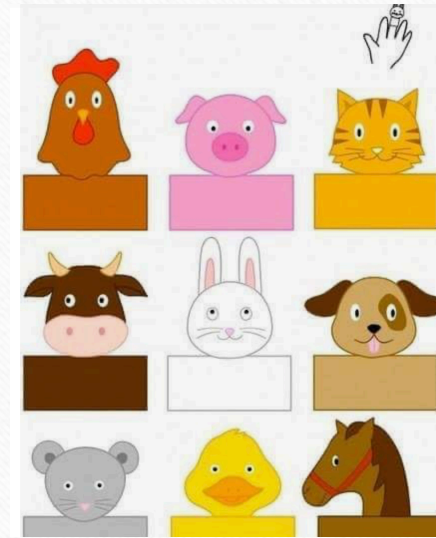
Dairy farm role play

Ask a grown up if they have some old rubber gloves you can use to make your own dairy farm. Simply fill the gloves with water, tie string around the wrist part and hang from a washing line. Snip small holes in the fingertips and catch the water in a bucket.



Farmyard finger puppets

Print off the 'Finger puppet farm animals' page (underneath this file in Remote Learning) if you have a printer. If you don't have a printer you can draw your own animals and make them into puppets.



Now you can use your puppets to make up your own farmyard stories.

Using the poster on the next page, answer these questions. Try to answer using full sentences. For example, "I can see 8 sheep."

Farm Counting

'Can You Find...?' Poster Instructions

Can you find these things in the picture?

8 sheep

7 chickens

6 eggs

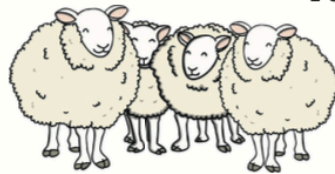
5 pigs

4 horses

3 hay bales

2 tractors

1 scarecrow



What is your favourite farm animal? Why do you like them?

Can you make the animal sounds for each of the animals in the poster?

What type of shoes is the farmer wearing?

What is the job of the scarecrow?

Have you ever visited a farm?



twinkl
visit [twinkl.com](https://www.twinkl.com)





Favourite farm animal

Draw a picture of your favourite farm animal. Label the picture and, for an extra challenge, write a sentence to explain why it is your favourite. Can you find out some interesting facts about the animal you have chosen?

Mrs Piercy's favourite farm animal is a horse because it has a long swishing tail and hooves that make a clip-clop sound.

Follow the link below for some farmyard songs, rhymes, listening games and stories.

<https://www.bbc.co.uk/teach/school-radio/eyfs-listen-and-play-on-the-farm/zb43pg8>

